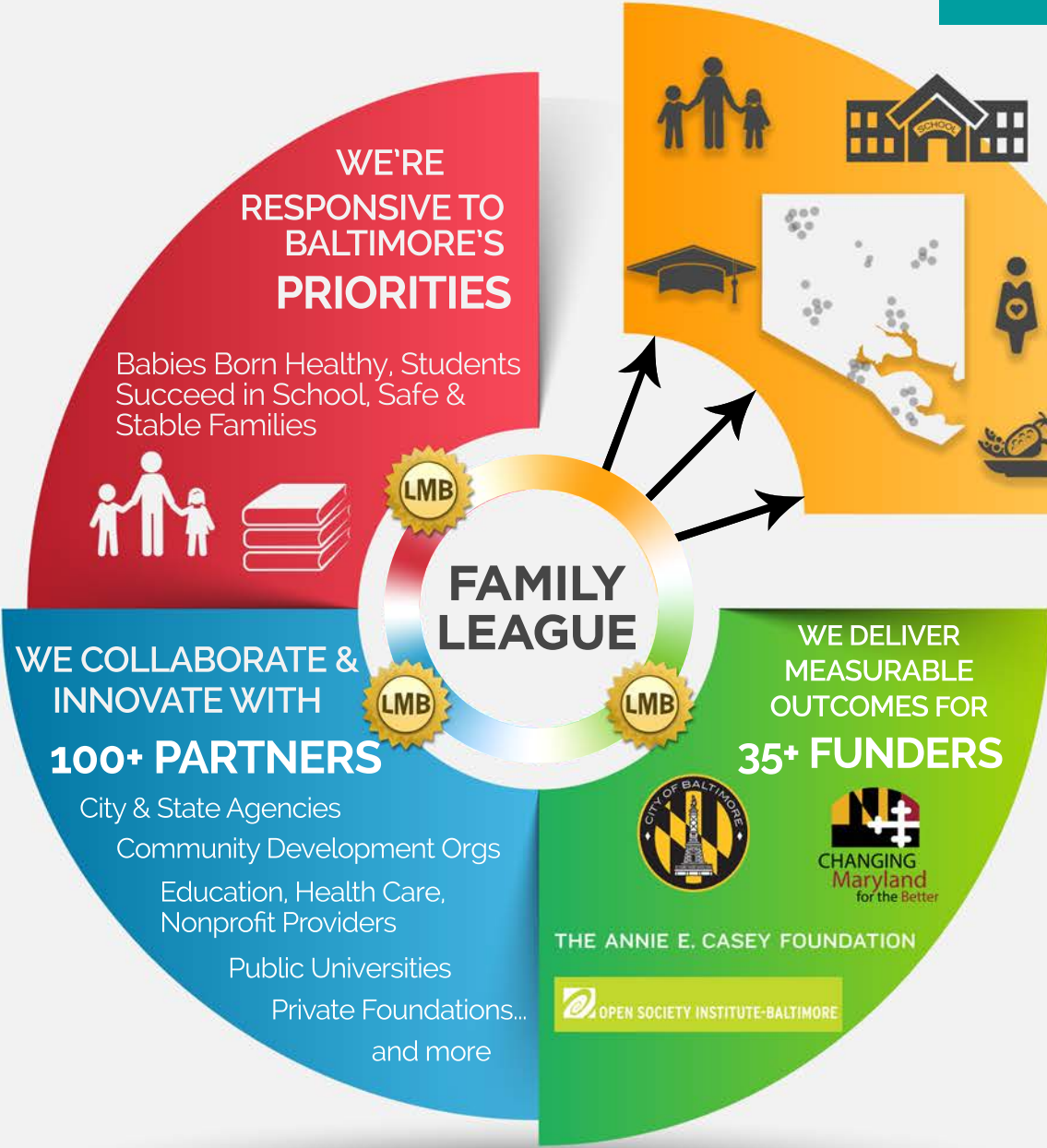


STRATEGIC OVERVIEW



Each year, as a **result** of our work, **tens of thousands** of children, youths, and families living in **Baltimore City** gain **access to opportunities** that help them reach their potential.

- LMB** As a Local Management Board:
- We ensure investments align with local priorities.
 - We bring all the right partners to the table—large and small—to strengthen collective impact.
 - We're efficient stewards of public & private dollars.