



FY23

# FUNDED PARTNERS WEEK

FAMILY LEAGUE  
OF BALTIMORE

# DAY 2 AGENDA

## **PART III: *Let's strengthen your organization***

- Data & Evaluation – Jessie Tartanian
- Presentations by Partners:
  - Kim Hammonds, DRU Mondawmin Healthy Families
  - Eric Jackson, Black Yield Institute

## **PART IV: *Let's learn the ABC's of FUNDINGtrack***

- The Fundamentals of Fundingtrack – Patrick O'Connor & Shebbi Eversley



# Data & Evaluation





# Hello!

**Jessie Tartanian**  
**DIRECTOR OF DATA AND  
EVALUATION**

- Point person for Adaptive Village partners
- [jtartanian@familyleague.org](mailto:jtartanian@familyleague.org)







## Kayla Jones

### PROJECT MANAGER OF INTERAGENCY INITIATIVES AND FOOD ACCESS PROGRAMS

- K.E.Y.S. Empowers/YSB, Family Recovery Program, Family Stability Program, Thriving Youth, MOAAME, Agrihood, Local Care Team, Food Access programs
- [Kjones@familyleague.org](mailto:Kjones@familyleague.org)





## Masha Keller

### PROJECT MANAGER OF EXPANDED YOUTH PROGRAMS AND SPECIAL PROJECTS

- Community based youth programs and Rec and Parks; research projects
- [Mkeller@familyleague.org](mailto:Mkeller@familyleague.org)







## Ross Hackett

### PROJECT MANAGER OF MATERNAL AND CHILD HEALTH/ EARLY CHILDHOOD INITIATIVES

- B'More for Healthy Babies, Home Visiting, Housing, Care Coordination, Childcare Stability, HIPPPY
- [Rhackett@familyleague.org](mailto:Rhackett@familyleague.org)





## Shon Aggison

### PROJECT MANAGER OF SCHOOL-BASED INITIATIVES

- Community Schools and Out of School Time Programs
- [Saggison@familyleague.org](mailto:Saggison@familyleague.org)







# How can the Data & Evaluation Team support you?

Let's get started!



## Data requirements for your grant:

- ✓ Drafting performance measures
- ✓ Providing data collection tools: Surveys, trackers, and forms
- ✓ How to collect, manage, and calculate your data

## Growing your data and evaluation capacity:

- ✓ Professional development workshops
- ✓ Writing research questions for your own evaluations
- ✓ Sharing about your impact
  - Maps & graphs
  - Review reports

## Results Based Accountability:

- ✓ Framework we use to understand and learn from data and measure performance



# Performance Measures

**All Funded Partners are required to develop and report on three kinds of performance measures:**

- ✓ How much or how many did we do?
- ✓ How well did we do it?
- ✓ Is anyone better off?

**Fall Kick-off meeting:**

- ✓ Getting to know your project manager
- ✓ Reviewing data and evaluation calendar and requirements
- ✓ Performance measure drafting support
- ✓ How to use the data collection tools
- ✓ How to report your data





# Reporting

The IT team at Family League includes a **HELP DESK** to support partners with *Fundingtrack* training and support.

## Monthly Reports

- Due in FUNDINGtrack between the 1st and 5th (Oct. 5 for Sept. data)
- You will upload a trackers spreadsheet for our review
- We send you the changes requested before approval.

## Quarterly Reports

- Due in Fundingtrack between the 15<sup>th</sup> (Oct 15 for July-Sept) and have number and narrative
- We enter data from the trackers you submit, then you write the narrative before the program team reviews it.





# Consent

- Programs that work with youth will use an online consent form
- Needs to be sent out ASAP, with enrollment packets is best
- Your project manager will supply links, QR codes, and instructions

I have read this Permission Form. Please check the box that shows your choice. \*

☐ Yes, you may use my information and give me a survey.

☐ No, do not use my information and do not give me a survey.

Sign Your Name Here: \*

Print Your Name Here: \*

First  Last

Date You Signed This Form: \*

Your Date of Birth: \*

Program Name: \*

Select program name for list below

Are you a site manager filling out a paper version of the consent form on behalf of the participant/parent? \*

☐ Yes

☐ No

Email \*

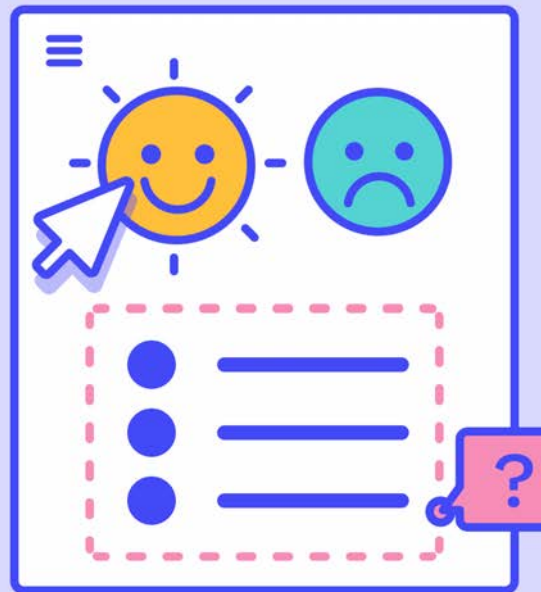
Email \*

Submit



# Surveys

- Many programs collect surveys from participants
- Your project manager will supply links, QR codes, and instructions
- Partners get a live dashboard of results on survey Monkey in real-time
- We will share overall learnings and recommendations several months after collection



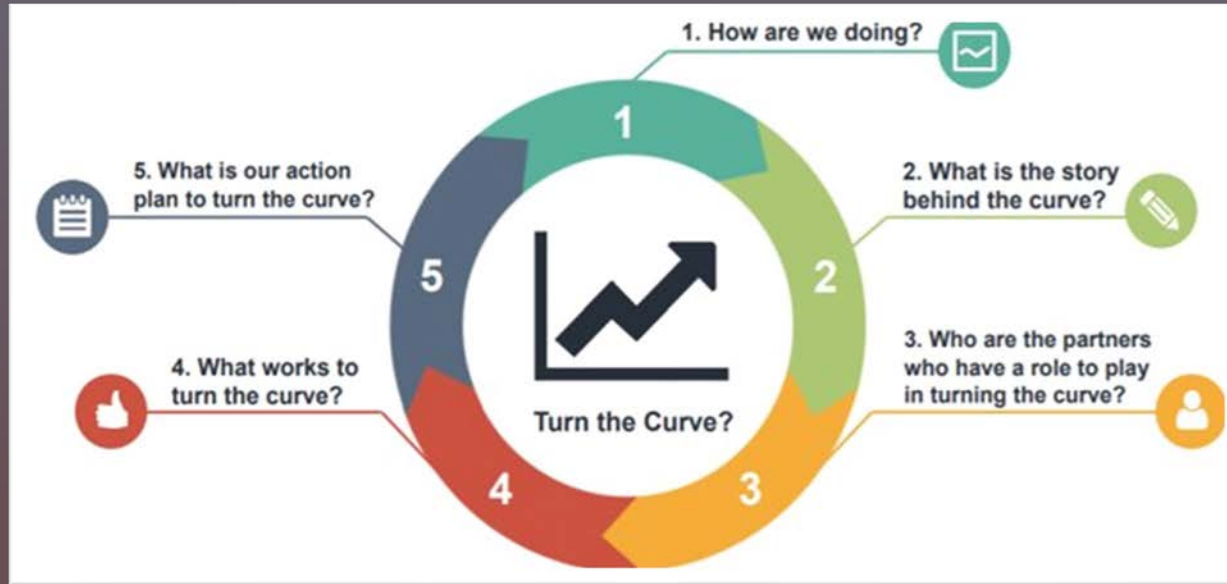


# Quarterly Turn the Curve Conversations

- We support partners with reviewing their data and discussing what supports and partners will help to turn the curve.
- These conversations will be included as part of existing meetings wherever possible (cohort meetings, check-ins, site visits, etc.).
- These meetings are aligned to the Results Based Accountability framework we already use to measure performance.



# Quarterly Turn the Curve Conversations







# *We look forward to celebrating your impact and learning with you!*



Jessie Tartanian

DIRECTOR OF DATA  
AND EVALUATION



Kayla Jones

PROJECT MANAGER OF  
INTERAGENCY  
INITIATIVES AND FOOD  
ACCESS PROGRAMS



Masha Keller

PROJECT MANAGER OF  
EXPANDED YOUTH  
PROGRAMS AND  
SPECIAL PROJECTS



Ross Hackett

PROJECT MANAGER OF  
MATERNAL AND CHILD  
HEALTH/EARLY  
CHILDHOOD  
INITIATIVES



Shon Aggison

PROJECT MANAGER OF  
OUT-OF-SCHOOL-  
BASED INITIATIVES





# Funded Partner Presentations



# Funded Partner

**Eric Jackson**

**SERVANT DIRECTOR AT BLACK YIELD  
INSTITUTE**

**[blackyieldinstitute.org](https://blackyieldinstitute.org)**

**@BlackYieldInstitute**



*Black Yield*





# **“Like Dark Chocolate”: Bittersweet Experiences w/ the Team & Reporting at FLBC**

Funded Partners Week  
August 16, 2022

Presented by: Eric Jackson, Servant-Director



# About Black Yield Institute

Pan-African power institution based in Baltimore, Maryland, serving as a think tank and collective action network that addresses food apartheid.

Since our beginning in November 2015, we have worked collaboratively with black people and entities, along with other institutions, in pursuit of Black land and food sovereignty.

We are unapologetically a Black-led institution, utilizing Afrocentric, Pan-African, and human rights frameworks to anchor our thought and works toward liberation through food.



# BYI Meets FLBC (a love story...)

- Chance encounter in March 2018
- Relationships are essential
- Collaborative Spirit
- Worked out the Kinks
- Employed Patience
- Built Trust through mutual respect



# “Oh, Lord”: Navigating FundingTrack

- Getting used to monthly data collection and reporting
- Dealing with the specificity with compassion
- Taking time to understand the accountability system and requirements
- Working with representatives for data and programming
- Meeting regularly and troubleshooting communications
- Asking a bunch of questions
- Being patient and staying cool
- Monumentalizing your story and producing your data



# “Come on now”: Managing Deliverables

- Assessing your organizational capacity
- Creating your own flow
- Setting up the deliverables collaboratively
- Being okay with getting it “wrong”
- Developing capacity and infrastructure for efficient and effective data collection
  - Based on your organization
- Knowing your “playbook” and prepare for submission
- Making shifts and getting better at reporting



**“While we have had a rough go, BYI gives thanks for the many opportunities to fail and start again. The patience and consistency of the FLBC Leadership and Team has been instrumental in our institutional growth and has aided in the ways in which we partner with funders in general.”**

**- Eric Jackson, Black Yield Institute**






# QUESTIONS & ANSWERS







**Eric Jackson**  
**Servant-Director**  
**[ejackson@blackyieldinstitute.org](mailto:ejackson@blackyieldinstitute.org)**  
**[www.blackyieldinstitute.org](http://www.blackyieldinstitute.org)**





# Funded Partner

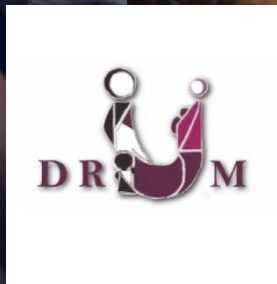
**Kimberli Hammonds**

EXECUTIVE DIRECTOR

DRU/MONDAWMIN HEALTHY FAMILIES INC.

[Drumhealthyfamilies.org](https://Drumhealthyfamilies.org)

@DruMondawminHF





## What is DRUM?

DRUM Is a Community-based Healthy Families America Affiliate. (HFA) is a national initiative that provides screening, referral services and home visitation to pre and postnatal families that are at risk for poor maternal and infant outcomes.

### *Our Guiding Vision*

*DRUM envisions communities and neighborhoods where all children are healthy and enter school ready to learn.*

*As Baltimore's oldest evidence based home visitation program we empower parents who reside in the neighborhoods we serve to achieve healthy births, positive infant and toddler outcomes and early childhood school readiness.*

*We further envision a community where residents are valued and treated with respect by helping entities and service providers.*

### Mission

*DRUM Healthy Families is committed to providing strength based quality support to families with pregnant women and young children from birth to school readiness in order to enhance the lives of the parents and positively impact the safety and development of healthy children.*







*DRUM Healthy  
Families, Inc.*

*Working in Partnership  
to support  
Healthy Families  
Healthy Babies  
and  
Healthy Communities  
~ Serving ~  
targeted communities in  
West, and East  
Baltimore*

*2100 N. Eutaw Place Baltimore,  
Maryland 21217  
Phone Number: (410) 225-3555*



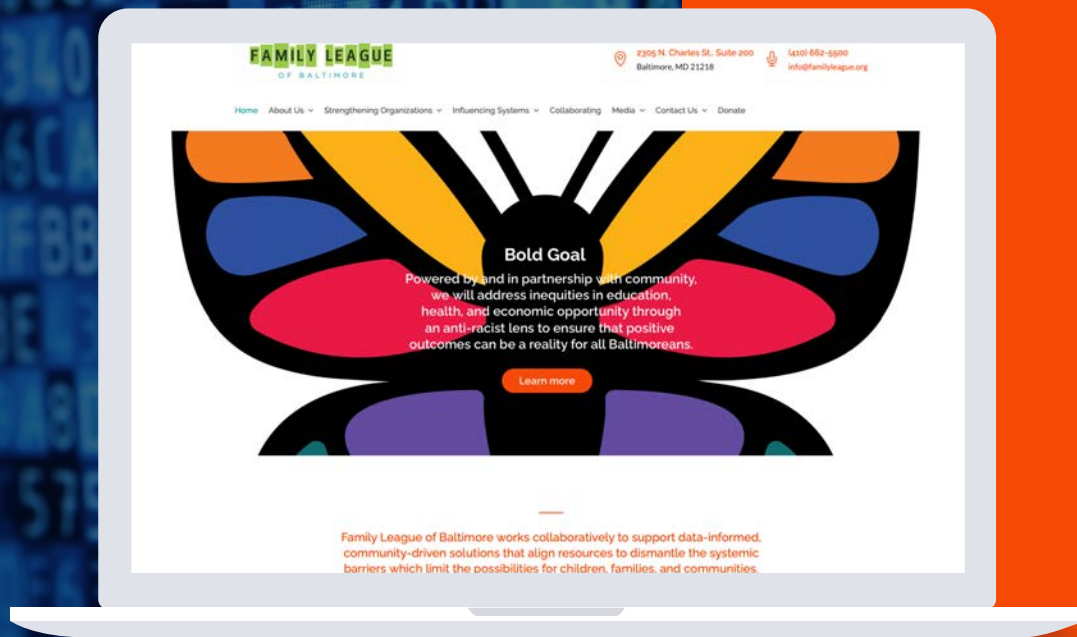
*In partnership with our local management board,  
“Family League of Baltimore “ to achieve the best possible  
outcomes.*

*Working with the Funded Partnerships Team*

- Program Management Team
- Data/Evaluation Team
- Fiscal Team
- Navigating Funding Tract ( Fiscal year start up, program documents, program reporting and fiscal reporting and accountability
- Using your Funded Partners team as a ready resource for guidance and clarification.



# Innovation & Technology





## Dara Gray

### SENIOR DIRECTOR OF INNOVATION & TECHNOLOGY

Dara leads our team collaboration to ensure we best serve all our partners with a focus on integrity, stability and security



[support@familyleague.org](mailto:support@familyleague.org)





# Team Presentation



**Patrick O'Connor**  
**BUSINESS SYSTEMS**  
**ADMINISTRATOR**

Patrick ensures that all applicable software systems are operating at capacity in order to meet ever-changing business needs.



**Anton Smith**  
**INFORMATION**  
**TECHNOLOGY TECHNICIAN**

Maintains, troubleshoots and repairs hardware and software for Microsoft Windows based computer systems and peripherals such as printers and other related hardware.



**Shebbi Eversley**  
**IT TRAINING & SUPPORT**  
**SPECIALIST**

Shebbi provides technical assistance and support for all incoming queries and issues related to computer systems, software and hardware. Assists with training manuals and training users.



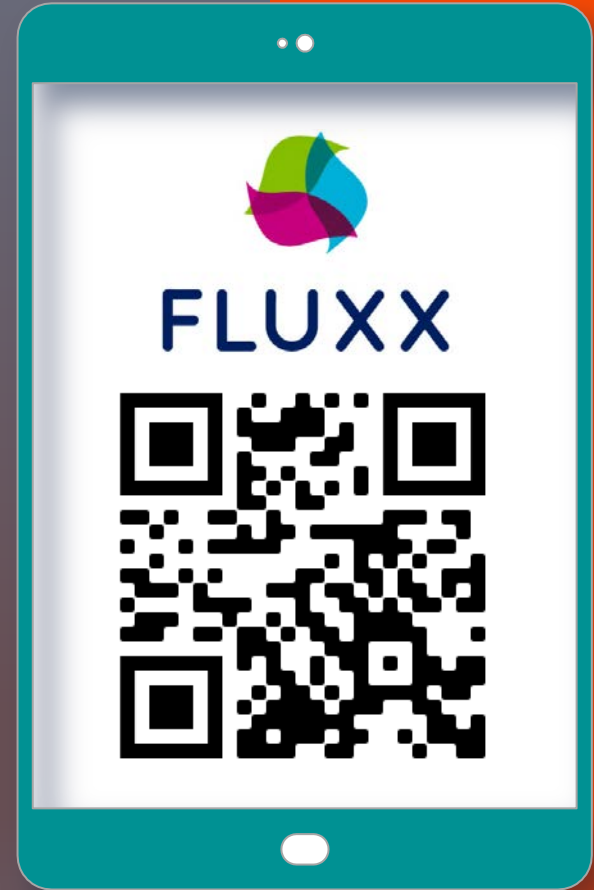


**How can IT  
support you?**



## What is *FUNDINGtrack*?

- ✓ ***FUNDINGtrack*** is Family League's online portal for submitting applications and reports.
- ✓ Through this platform, new applicants and current partners can apply for funding and submit reports if selected for funding.





## New to *FUNDINGtrack*

**FUNDINGtrack** navigation training is available on a monthly basis and registration can be completed via our **Professional Development** page.

Visit: [Familyleague.org](https://familyleague.org) or scan the QR code to go directly to the **PD** page

- 1) Go to [Strengthening Organizations](#)
- 2) Click on [Professional Development](#) calendar to sign up.

To register your organization:

- 1) Go to [Strengthening Organizations](#)
- 2) Click on [Funded Partnerships](#)
- 3) Click **FUNDINGtrack** and examine the Tutorials or click **Register** on the login landing page.

## Already a *FUNDINGtrack* user?

- Questions about access issues, reports or your grant application etc. can be directed to
  - [support@familyleague.org](mailto:support@familyleague.org)
  - Scan and bookmark this page for trainings and registration!







# HELP!

**You can find me here:**

Email: [support@familyleague.org](mailto:support@familyleague.org)

Call: (443) 423-0910

Always Provide:

- ✓ Name
- ✓ Program Type
- ✓ Organization
- ✓ Site/School
- ✓ Brief description of the issue
- ✓ Screenshots are helpful



EASY AS 1, 2, 3!



# Browser & Web Address



chrome



## Welcome to Family League's FUNDINGtrack

Login Now:

Your Name

\*\*\*\*\*

Sign in

[Reset or create password](#)

Family League of Baltimore's FUNDINGtrack serves applicants and Funded Partners. New applicants can submit proposals Online through the portal. Existing Funded Partners can access active and closed contracts as well as create a new proposal.

Those applying for the first time will need to register by selecting "Register" below. Your login credentials are emailed to you following submission of the registration form. It is quick, easy, and only required once.

Applicants are encouraged to complete the registration process well in advance of submitting an application.

Questions or problems, contact us at:

[support@familyleague.org](mailto:support@familyleague.org)

443-423-0910

Please note that this system requires Chrome.

[Download Chrome](#)

Register



[Privacy Policy](#) [Accessibility](#)



<https://flb.fluxx.io>

## FUNDED PARTNERSHIPS



Family League has deep relationships at all levels, from the Mayor's office to on-the-ground community organizations and is able to bring key players to the table to develop tools for change. Family League also connects and convenes private and public funders, local community leaders, educators, health professionals and business to develop a shared agenda for action.

We invest funding into community-based organizations to help children and families in Baltimore reach their full potential. We strive to improve institutions so that individuals can grow, learn, and build a better community.

Family League's funded partners are our link to Baltimore. We connect a wide range of partners with funding opportunities to help them mutually reach our goal that by 2030, all children in Baltimore will be born healthy, succeed academically, graduate high school and transition into higher education and the workforce.

If you have any questions, please contact the Funded Partnerships team at [fundedpartnerships@familyleague.org](mailto:fundedpartnerships@familyleague.org).

### Funding Opportunities

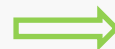
Destination Transformation: Fiscal Year 2022  
Virtual Funded Partners Week

[FUNDINGtrack](#)

Letters of Support

Reviewers

FUNDINGtrack is Family League's online portal for submitting applications and reports. Through this platform, new applicants and current partners can apply for funding and submit reports if selected for funding.



Access FUNDINGtrack

Email our Help Desk: [support@familyleague.org](mailto:support@familyleague.org)

Note: This system requires Chrome (if the version does not update automatically current version 87.0.4280.66).

### Registration Tutorial



### Grant Application Tutorial



[familyleague.org/funded-partnerships/](https://familyleague.org/funded-partnerships/)



# Standard Budget Report: 3<sup>rd</sup> Column

**FAMILY LEAGUE**  
OF BALTIMORE

Test Org

INFORMATION

Welcome

Funding Opportunities

APPLICATIONS (27)

Applications (21)

Active Contracts (5)

Previous Contracts (1)

REPORTS (72)

Overdue (37)

Expenses (9)

Attendance

Local Hiring

Program & Data (8)

Scopes (9)

Staffing & Background Checks (3)

Administrative (5)

Approved (3)

ORGANIZATIONS (1)

Organization Information (1)

FLUXX

Search...

Test Org  
CACFP -  
Spending Plan  
Due: 6/17/2019  
Status: New

Test Org  
CACFP -  
Standard Budget  
Due: 7/30/2020  
Status: New  
Funding Source: GOC  
FY: 2021  
Total Budget Amount: \$100,000.00  
Total Award Amount: \$250,000.00

Test Org  
Community School Strategy - Out of School Time Program  
Standard Budget  
Due: 5/30/2020  
Status: Q2 Report  
Funding Source: Test  
FY: 2021  
Total Budget Amount: \$100,000.00  
Total Award Amount: \$200,000.00

Test Org  
Special Projects -  
Spending Plan  
Due: 12/4/2020  
Status: New

Test Org  
CACFP -  
Standard Budget  
Due: 7/30/2020  
Status: New  
Funding Source: City of Baltimore  
FY: 2021  
Total Budget Amount: \$150,000.00  
Total Award Amount: \$250,000.00

**FAMILY LEAGUE**  
OF BALTIMORE

Standard Budget  
CACFP -

Test Org  
Contract Period: July 1, 2020 - June 30, 2021

Due: July 30, 2020

Total Budget Amount: \$150,000.00  
Total Award Amount: \$250,000.00  
Funding Source: City of Baltimore

Loading...

Unallowable Costs Addendum

Budget Modification Instructional Video Below. To play the video, please click on the Play icon. You can expand the video to fill your entire screen.

0:00 / 20:29

▼ Approved Budget/Expense Report

Total Budgeted Amount: \$0.00





# Tutorial & Resources

Video resources are available on our website for new partners registering their organizations and the grant application process. Additionally, we have some reports that include embedded video tutorials with step-by-step guidance on completing reports.

**Recommendations for additional tutorials are welcomed!**

Standard Budget  
Baltimore Summer Collaborative -

Test Org  
Contract Period: -


Approved On:

Due On: 1/25/2019

Total Budget Amount: \$100,000.00  
Total Award Amount: \$100,000.00  
Funding Source: GOC

[Unallowable Costs Addendum](#)

**Budget Modification Instructional Video Below.** To play the video, please click on the Play icon. You can expand the video to fill your entire screen.



Family League Amounts

Total Budget Amount:

[Delete](#) [Cancel](#) [Save and Continue](#) [Save and Close](#)


FUNDINGtrack is Family League's online portal for submitting applications and reports. Through this platform, new applicants and current partners can apply for funding and submit reports if selected for funding.

[Access FUNDINGtrack](#)

Email our Help Desk: [support@familyleague.org](mailto:support@familyleague.org)

Note: This system requires Chrome (if the version does not update automatically current version 87.0.4280.66).

### Registration Tutorial



### Grant Application Tutorial

