

FEBRUARY 2025

BOARD OF DIRECTORS MEETING
FAMILY LEAGUE OF BALTIMORE

AGENDA | FEBRUARY 26, 2024

- Welcome, Introductions, and Announcements | Nancy Blackwell, Chair
- Consent Items for Approval | Nancy Blackwell, Chair
 - October 2024 General Board Minutes
 - February 2025 President and CEO Report
 - February 2025 Finance Committee Minutes
- Fiscal Mapping Project Presentation | Chelsea DeJesus, Governor's Office for Children
- Breaking Down Barriers | Nina Kearin, Program Director and Ross Hackett, Program Manager
- President and CEO Announcement | Demaune Millard, President & CEO

Upcoming Important Dates: *General Body Board Meeting, April 30 (5:00pm - 7:00pm)*



Breaking Down Barriers: The Impact of Housing Supports on Family Health and Stability



Introductions



Nina Kearin

Program Director of B'more for Healthy Babies, Family League of Baltimore City



Ross Hackett

Project Manager of Data & Evaluation, Family League of Baltimore

Objectives

- *Introduce a Housing program for Healthy Families America Home Visiting participants launched in 2021*
- *Examine the historical contexts that necessitated this program*
- *Explore program successes, barriers, and outcomes identified by an external evaluation*
- *Gain ideas to pitch and implement a similar program with your funders!*



Children Are
Successful in
School



Families Are
Economically
Stable

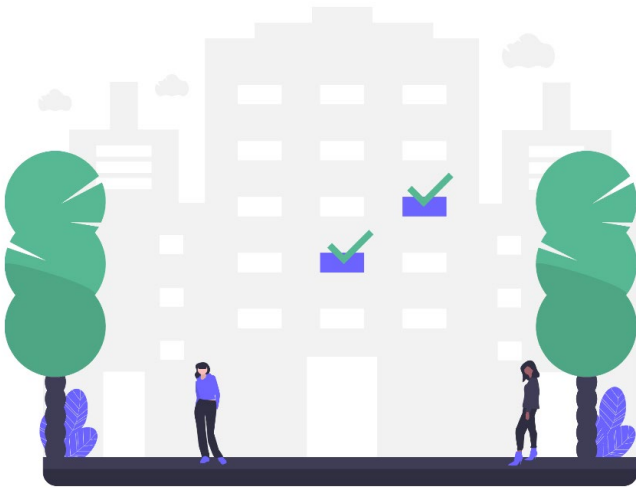


Communities Are
Safe For Children,
Youth, and Families

FAMILY LEAGUE
OF BALTIMORE

Program Conception – how did we get here?

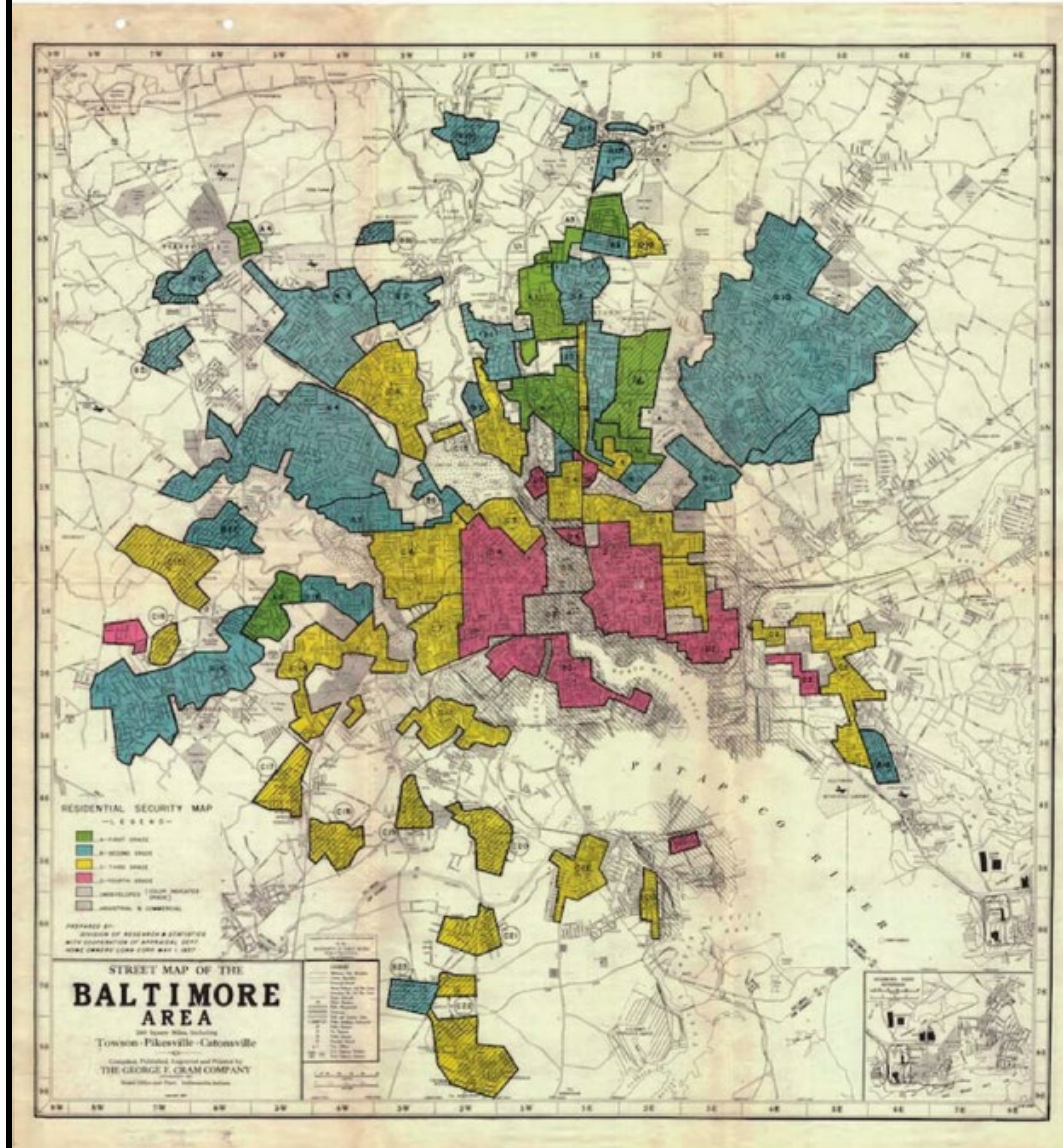
- Guaranteed income programs for birthing people
- State funding opportunity
- Impact of home visiting on health



"[Housing instability] can contribute to 'toxic stress' and other mental health conditions that alone can be devastating but can also exacerbate physical health conditions for adults and children"
(Bailey, 2020)

Historical Contexts - Redlining in Baltimore

Redlining and other racist housing policies affect present-day Baltimore



[937 Residential Security Map](#) of Baltimore completed by the Federal Housing Authority more commonly known as the Redlining Map. The area of the map shown in red and yellow explicitly demonstrates that neighborhoods predominantly occupied by African Americans, immigrants, and composed of older housing stock were considered high risk for home loans, therefore banks would not lend in these areas.

Program Structure – what is the program?

- Financial supports for active Home Visiting participants to put toward mortgage or rent payments
- Support mission and goals of Home Visiting programs
- 3 year grant + extension through June 2025



Home Visiting Housing Program Impact

\$6,340,168.23

in housing supports were disbursed to Baltimore City families enrolled in home visiting between July 2020 and January 2025

Families can be enrolled in HFA Home Visiting for up to 3 and in some cases 5 years, which could result in roughly \$18,000-\$30,000 in housing supports for one family.

Introduce the external evaluation

- **What is a “Mixed-Methods” Evaluation?**
 - Combines numbers and narratives/stories
 - Results in a more complete understanding of the subject!
- **What data did Amaka receive from us?**
 - 3 month follow up survey responses (~350 surveys)
- **What did Amaka collect for us?**
 - Qualitative data from focus groups

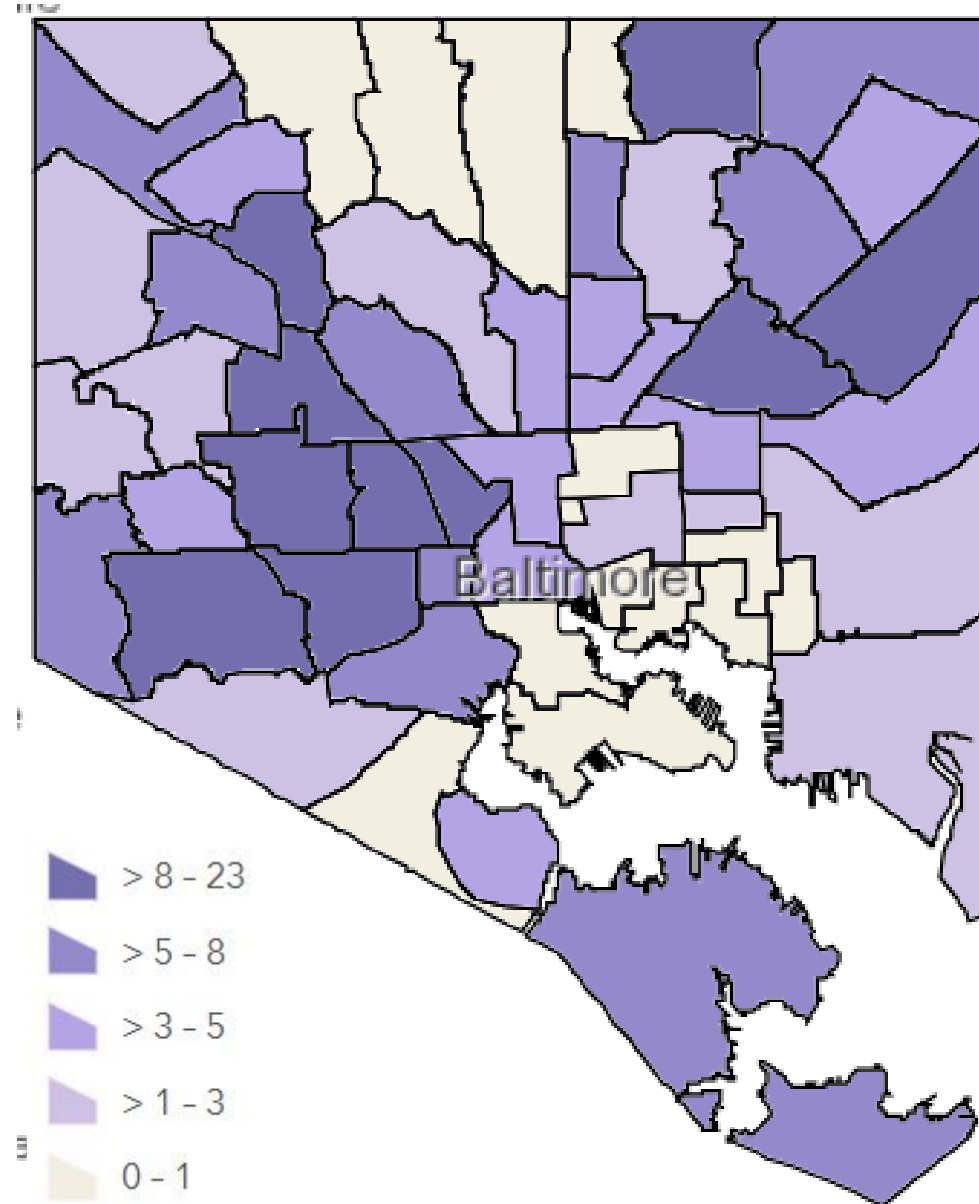


What did we
learn?

Program
Impact Data

Successes

Participants of the housing supports program are spread across the city, but are concentrated in **historically redlined neighborhoods**.

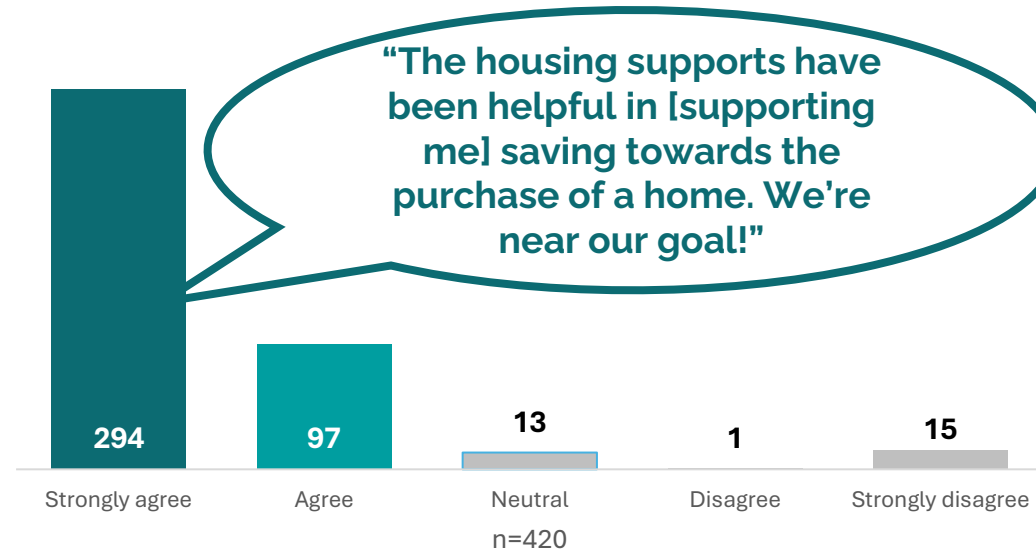


What did we learn?

Program
Impact Data

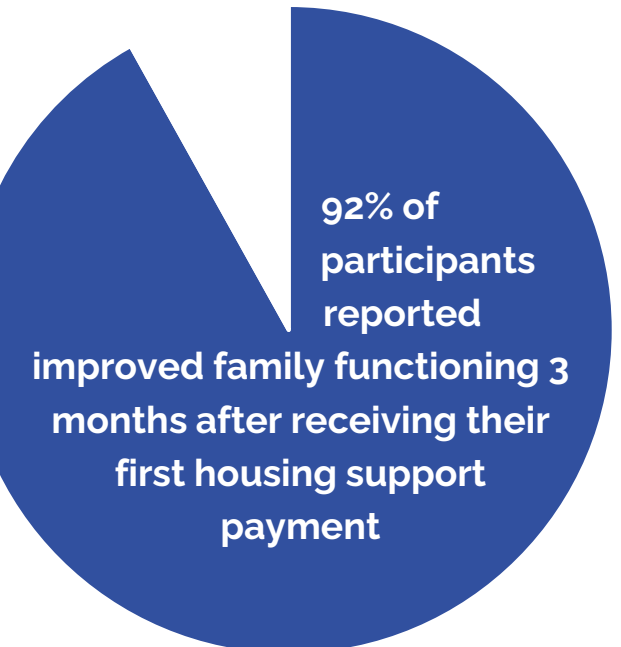
Successes

93% of participating families **strongly agreed** or **agreed** they were satisfied with the housing supports they received from their home visiting program



"I think it's very beneficial added support for those of us who are trying to take care of a household and family in today's economy. With everything including food inflation, I think this helps supplement areas we aren't able to cover on our own."

"The housing support has helped me significantly by lowering the financial stress after having my baby and not being able to work."



What did we learn?

External evaluation key Findings

Stable Housing

Maintained
Finances

Reduced
Stressors

Goal Setting

Increased
Number of
Home
Visitations

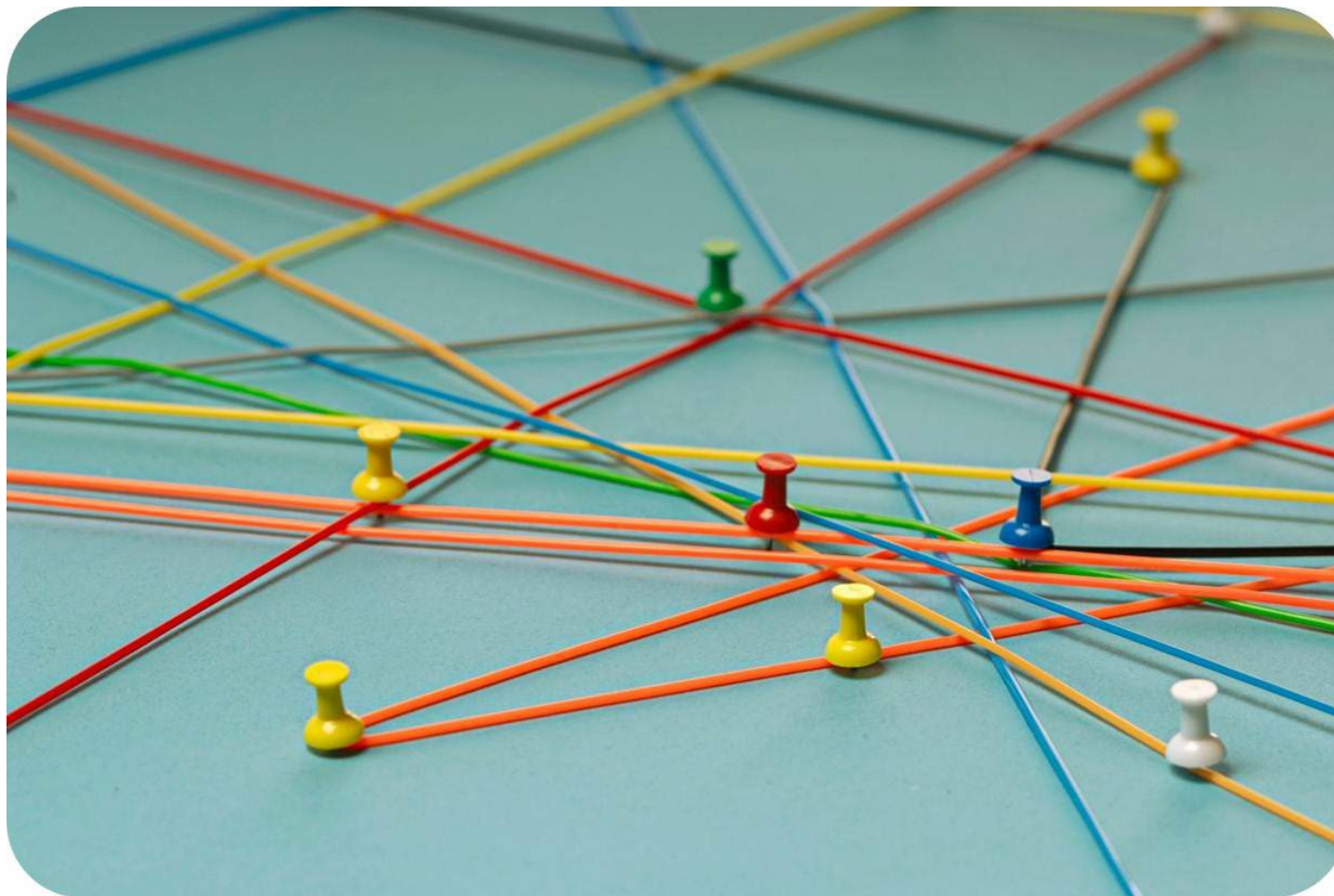
Expanded Program Satisfaction Survey

Financial Literacy Training

Standardized Program Operations and Onboarding

Streamlined Fund Distribution

What We Learned



Connecting the dots for funders

Links and Resources

- *Guaranteed Income program for birthing people:* [San Francisco's Abundant Birth Project](#)
- *Redlining and racist housing policies in Baltimore:*
 - ["The Black Butterfly" by Dr. Lawrence T. Brown](#)
 - [Baltimore and Redlining, StoryMap by Saeyon Sivakumaran](#)
 - [Mapping Baltimore's Demographic Divide – Center for Data Innovation](#)
- *Housing and health outcomes:* ["Housing and Health Partners Can Work Together to Close the Housing Affordability Gap" by Peggy Bailey](#)
- [How do economic supports benefit families and communities](#)

Contact Us!



Nina Kearin

*Program Director of B'more for
Healthy Babies, Family League of
Baltimore City*
nkearin@familyleague.org



Ross Hackett

*Project Manager of Data &
Evaluation, Family League of
Baltimore*
rhackett@familyleague.org







Dear Board Members and Colleagues,

As we enter the third quarter of FY25, I am proud to share both our impactful progress and an exciting milestone in Family League's journey. This quarter marks not just our continued advancement of thriving families in Baltimore, but also our transition to a new home that represents our renewed commitment to the communities we serve.

A New Chapter for Family League

After more than 15 years at 2305 North Charles Street, we have successfully moved to our new location at 1734 Maryland Avenue, 3rd Floor, within the Co-Op at Maryland Avenue. For correspondence, please note our updated mailing address: 919 West 34th Street, PO Box 50129, Baltimore, MD 21211. This move represents more than a change of address—it's a testament to our growth and the next chapter in our collaborative journey of transformation.

This transition would not have been possible without many dedicated hands. Special thanks to La-Tonia Rush for her exceptional project management, Dara Gray and the Innovation and Technology team for ensuring our essential systems remained accessible, and Tiffany Snead-Rose for coordinating our welcoming hospitality efforts. To everyone who contributed to cleaning, purging, and prioritizing this effort alongside your daily responsibilities—thank you.

Program Excellence and Community Impact

The success of the B'More for Healthy Babies initiative continues to thrive, with hospital breast/chestfeeding initiation rates reaching 92% among participants. The Home visiting programs continue to exceed MIECHV family targets. Also, our investments in school readiness continue to be impactful. HIPPY programming has surpassed enrollment goals across all three sites.

Youth Development and Educational Innovation

Our Out-of-School Time programs maintain 87% average daily attendance, exceeding our 83% target. Through strategic collaboration with city partners, we've invested over \$5.3 million in OST programming, serving more than 3,400 K-12 students across 69 Community Schools. The recent recognition of programs like Morrell Park Elementary Middle School by MSDE validates our approach.

Critical Funding and Legislative Priorities

During the 2025 legislative session, we face crucial funding decisions, including the proposed reduction to our \$3.5 million BCYF LMB grant. This would significantly impact services currently supporting over 3,200 Baltimore residents. We continue engaging policymakers about maintaining this essential funding that delivers measurable outcomes at just \$1,077 per participant.

Looking Forward

As we settle into our new space and navigate challenges ahead, Family League remains focused on creating lasting positive change in Baltimore. The ENOUGH Initiative awardees announcement, with eleven Baltimore representatives, signals growing momentum for community-driven solutions. From our new home, we'll continue advocating across our four key pillars: cradle to career education, healthy families, economic security, and safe communities.

With gratitude and determination,

Demaune A. Millard

President & CEO, Family League

Family League is a 501(c)(3) nonprofit organization and the designated Local Management Board for the City of Baltimore. Established in 1991, Family League works collaboratively to support data-informed, community-driven solutions that align resources to dismantle the systemic barriers which limit the possibilities for children, families, and communities.

Guided by core values of stewardship, performance, trust, respect, innovation, and equity, Family League provided \$19M to 84 funded partners, benefiting more than 14,000 children, youth, and adults in Baltimore in fiscal year 2024.

